



184 *B*UTCH CASSIDY DRIVE

TELLURIDE
REAL ESTATE
CORPORATION

Exclusive Affiliate of
CHRISTIE'S
GREAT ESTATES

184 BUTCH CASSIDY DRIVE
TELLURIDE MOUNTAIN VILLAGE,
COLORADO

With unparalleled privacy and unobstructed 200° views, this slope-side home in a forested setting is a superb contemporary architectural statement embodying exceptional design elements. Its extensive features and inclusions are outlined below. Comprehensive details can be viewed at www.184ButchCassidyDrive.com or are available upon request.

Elements:

5 Bedrooms & sleeping loft, 6.5 bathrooms. The master suite features a Peter Clary custom bed on granite blocks and a 16-17th century Spanish chestnut sliding entry door. The master bathroom includes a massive custom concrete tub with jets, auto fill and temperature controls. 2 guest suites, each with an en-suite bathroom. Bunk room with 3 double and 2 twin beds.

Guest house above the detached garage includes one of the total bedrooms and en-suite baths plus loft, kitchenette, dining area, laundry facilities and deck.

Living room. The living room with two-sided wood-burning fireplace accesses the main deck with gas grill/roisserie. A dramatic custom etched and fiber-optic lighted glass bridge over the living room connects the master suite, cantilevered main stairs and tower.

Kitchen with breakfast nook & pantry; dining room with wet bar. Appointments include SubZero refrigerators/freezer, Miele dishwasher, Wolf range, Thermador double ovens, Kitchen Aid trash compactor, Panasonic microwave w/convection, Scotsman ice machine, cabinet suitable for Cruvinet wine keeper, custom stainless hood. A Gulassa & Company custom steel dining table is integral to the dining room.

Spa/exercise wing with steam room, immersion shower room (with 11 shower heads), sauna, dressing room, toilet room and hot tub in an enclosed room with glass roof and



W

retractable exterior glass walls. Exercise area has cork tile flooring, under-counter refrigerator, flat screen TV, home gym, elliptical cross trainer, exercise bike, treadmill, dumbbells and rack. A floor to ceiling glass partition and door with custom art handle and etched Native American symbol highlights the entry.

Multi-purpose family room with wet bar and wood burning fireplace converts to a home theater with projector, 10' retractable screen, extensive A/V equipment and 14-speaker sound system. Motorized blackout shades, sound insulation. Custom Blatt Billiards zinc 9' pool table. TV screens are also located in the tower, exercise area, kitchen nook and guest house living room.

Tower room with 360-degree views houses an office and sitting room with kitchenette and private deck. Peter Clary custom desk with steel reinforced black nautiloid fossil desktop and double steel pedestal enclosures for files and computer equipment. Motorized blackout shades. "Pop-up" flat screen TV.

Wine tunnel (cellar), 56' long, simulates a Telluride area mining tunnel with exposed silver vein along with water mist and sound effects to imitate the mine environment! It contains an historic steel ore cart on mine rails, recycled wood from an old Utah railroad trestle and extensive faux stone walls. 1,600 bottle capacity with keypad security access.

Ski-in, ski-out funicular from the house to Sundance ski run is comprised of a steel car and tracks fabricated to simulate an old mining car, seats 4 plus ski and snowboard racks. Keypad security access.

6 decks include a 35-foot high stainless steel platform tree deck with fire-pit and 360° views and a covered loggia with steps to the courtyard.

Oversized, 3-car garage includes workshop, storage room, generator room (with Cummings Onan generator) built-in cabinets and sink area, trash room, mechanical room and in-floor heat.

Additionally. Mud room with ski tuning bench; entry; laun-

With unparalleled privacy and 200+ degree views, this 5-bedroom, 6.5-bath slope-side home is a superb contemporary architectural statement, embodying exceptional design elements.

\$15,000,000

FURNISHED

Features & Inclusions:

Exterior

Unparalleled privacy on a gently sloping forested lot thereby sheltered from views by nearby houses, streets or ski runs. Supplemented by 120+ planted spruce and aspen trees Adjacent to open space and at the hammerhead of a private cul-de-sac Unobstructed 200-degree views of the San Sophia Ridge to the north, Gold Hill to the east and the La Sals to the west in Utah Exterior finishes are Telluride Gold stone, vertical clear cedar and cor-ten steel siding Roofs are corrugated cor-ten steel and shake shingle. Pella windows & doors Courtyard with tree-lined walkway, grass courtyard, flower beds, landscape lighting Driveway and auto court are concrete aggregate. Drive, decks, stairs and loggia are snow-melted Sprinklers and drip irrigation for landscaping and lawns Speakers on decks. Lightning rods on all roofs

Interior

2 wood-burning fireplaces with permit included Plaster and Telluride Gold stone walls. Stainless steel railings and accents Ceilings of a variety of natural woods, some barrel vaulted, some peaked Birds-eye maple doors; cherry, poplar and birch cabinetry Granite, marble, zinc, stainless steel and concrete countertops Floors of antique pine plank, acid-stained concrete slab, China slate, bamboo, travertine Merida natural sisal and Atelier carpeting. Conrad natural fiber window coverings Custom hand-blown glass chandeliers inside and out Radiant in-floor gas heat with supplemental forced air heat, selective cooling and central humidification. Fire sprinkler system. Extensive insulation Plumbing fixtures include Dornbracht (primarily) Porcher & Duravit WCs, Romā steam and Brasstech showers, Franke, Arwa, Kohler, Jado, Kroin, and Kindred 9 drinking water filters. Dumbwaiter serves 4 levels. Laundry chute Art niches and art accents throughout. Faux painted recessed speakers, sprinkler heads, etc.

Smart House Systems

The smart house systems with external monitoring incorporate whole house A/V (interior & exterior), computer & internet networking, climate control/HVAC, lighting, phone system with 4 phone lines, satellite TV, extensive security systems, access and safety systems, video

dry room with Maytag Neptune washer & dryer, cabinetry, laundry sink and retractable ironing board.



monitoring with sound recording, weather station, power management, surge and backup systems, snowmelt, hot water; wine tunnel temperature and humidity controls; interior houseplant irrigation system; water reclaiming systems; high pressure water system for garage and decks. AMX in-wall & wireless remote control panels

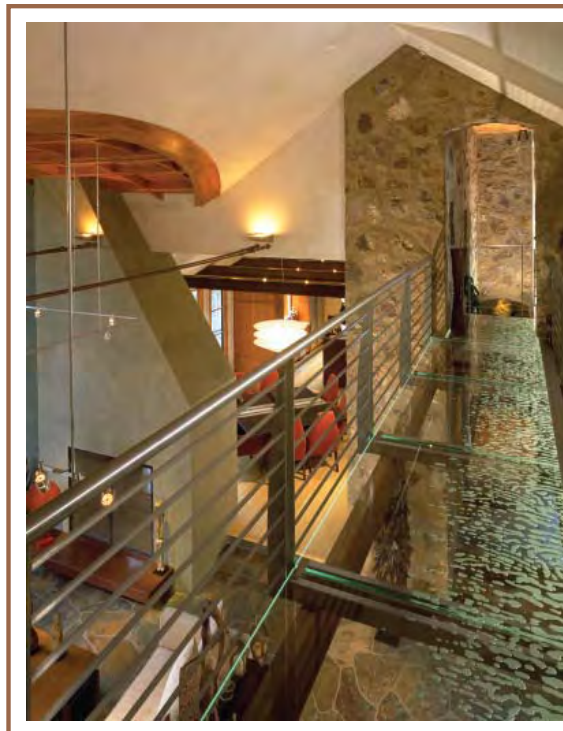
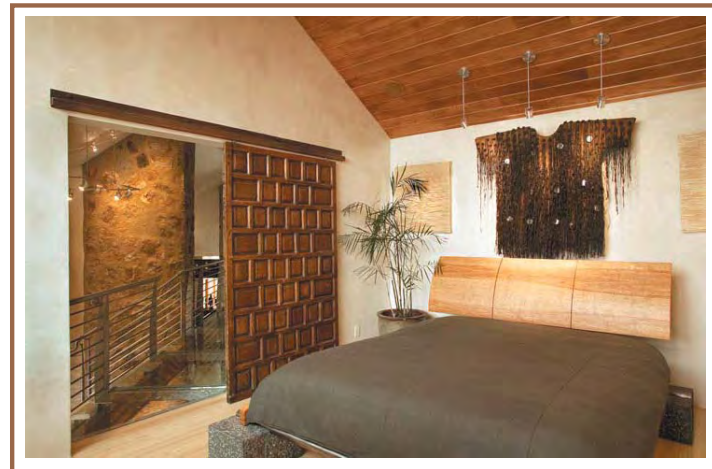
Important Art Inclusions

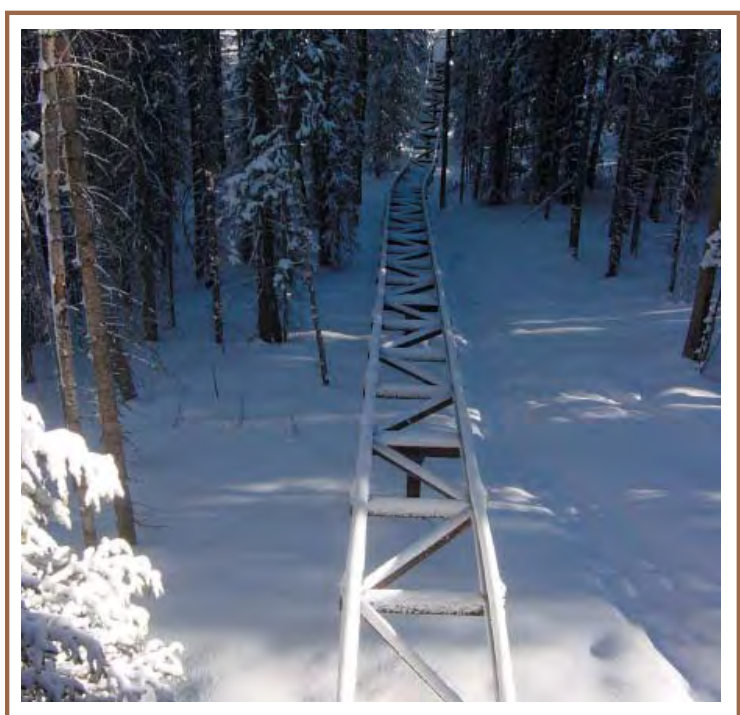
- 3 Lika Mutal granite sculptures, commissioned for this house. One in the living room, two exterior in courtyard & woods
- Uzbek Kilim (25' x 2'1") hanging fabric in stairway
- Michael Boles hand and foot molds embedded in entry, hot tub room, living room and bunk room
- 2 Nafana/Bedu Sakrobundi masks from Côte d'Ivoire in guest house

Publications

The house has been published in Mountain Homestyle magazine summer 2005 and Ultimate Backyard: Inspired Ideas For Outdoor Living by Michelle Kodis.

Contractor: Overly Construction, Telluride, CO
Architects: Cottle Graybeal Yaw, Telluride & Aspen, CO
Interior architect: Colleen Gavin, Santa Fe, NM
Custom Lighting architect: Patrick Quigley & Associates, Los Angeles, CA







5 Bedrooms & Loft

6.5 Bathrooms

Square Footage (per architect)

Living Area: 7,872

Garage and Storage: 1,473

Decks and
Covered Walkways: 1,200+/-

Lot: 929R, Mountain Village

Lot Size: 1.79 acre

2008 Taxes: \$28,297.54

MV Metro Dues: \$40/month

RETA: 3%

Year Built: 2001

Price: \$15,000,000 furnished
(excluding wine, artwork & pedestals,
artist's easel, and personal effects)